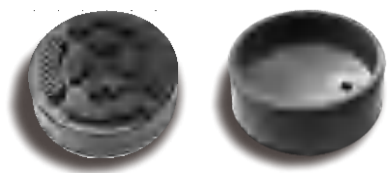
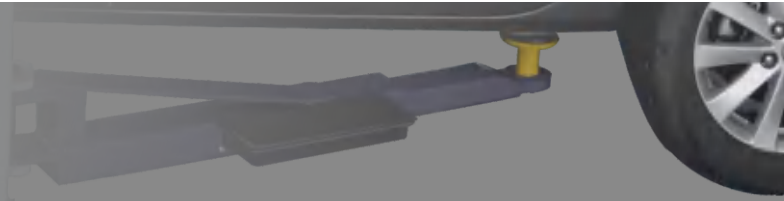
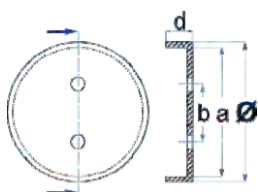


# Rubber pads for world major two post lifts



NO:10203043

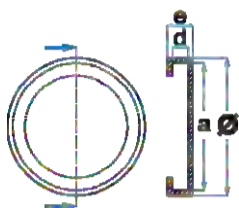


**Suitable for:**  
AMGO/PEAK/LAUNCH/XUDA/  
ROTARY/TWIN BUSCH/RP TOOLS

$\varnothing = 120\text{mm}$   $a = 110\text{mm}$   $b = 70\text{mm}$   
 $d = 33\text{mm}$



NO:10201117

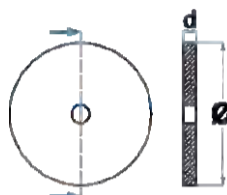


**Suitable for:**  
PEAK/RAVAGLIOLI/SIRO/SPACE

$\varnothing = 110\text{mm}$   $a = 89\text{mm}$   $d = 9\text{mm}$   
 $e = 21\text{mm}$

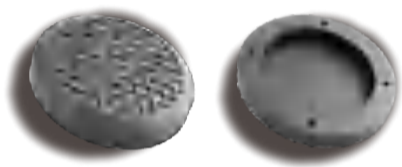


NO:10209134

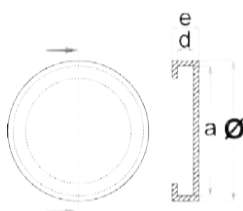


**Suitable for:**  
PEAK/ROTARY

$\varnothing = 120\text{mm}$   $d = 20\text{mm}$



NO:10201113

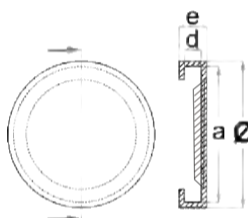


**Suitable for:**  
ROTARY models with 3SA arms

$\varnothing = 123\text{mm}$   $a = 112\text{mm}$   $d = 8\text{mm}$   
 $e = 20\text{mm}$



NO:10201119

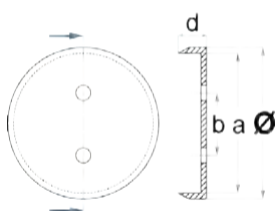


**Suitable for:**  
Challenger

$\varnothing = 139\text{mm}$   $a = 120\text{mm}$   $e = 20\text{mm}$

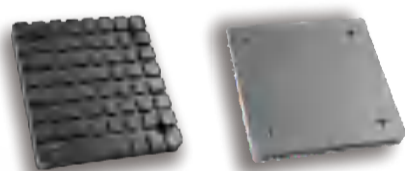


NO:10201112

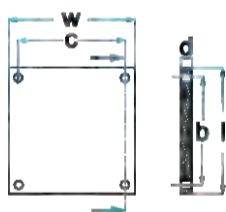


**Suitable for:** NUSSBAUM/AMI/  
AMMCO/ATT/FORCE/PHOENIX/  
SNAP-ON/Wheeltronic

$\varnothing = 125\text{mm}$  with steel plate  
 $a = 120\text{mm}$   $b = 90\text{mm}$   $e = 20\text{mm}$   
 $d = 24\text{mm}$

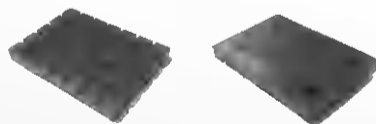


NO:10680004

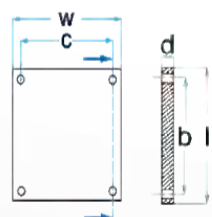


**Suitable for:**  
PEAK/BENDPAK

$b = 90\text{mm}$   $c = 90\text{mm}$   $d = 10\text{mm}$   
 $W = 120\text{mm}$   $l = 120\text{mm}$

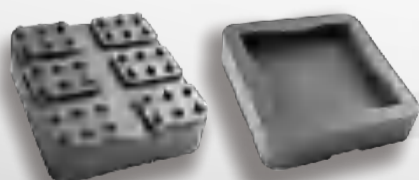


NO:10201109

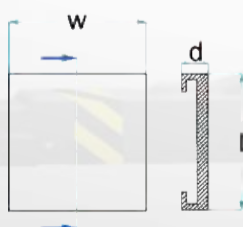


**Suitable for:**  
AMGO/PEAK

$b = 76\text{mm}$   $c = 46\text{mm}$   $d = 8\text{mm}$   
 $W = 102\text{mm}$   $l = 72\text{mm}$



NO:10201118

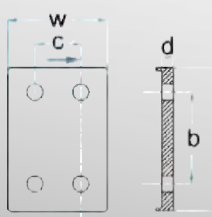


**Suitable for:**  
BENDPAK/RANGER/DANMAR

$d = 32\text{mm}$   $w = 143\text{mm}$   $l = 143\text{mm}$



NO:10201106



**Suitable for:**  
PEAK/SILENT/XUDA/ROTARY

$b = 60\text{mm}$   $c = 40\text{mm}$   $d = 20\text{mm}$   
 $W = 80\text{mm}$   $l = 118\text{mm}$